

Steel Profile External Door SP500

AREAS OF USE

The steel profile door is intended for outdoor use in residential and public buildings where fire resistance is not required for the product.

The products are mostly made of SP500 series steel profiles (sometimes also SP700), which are made of unprocessed, galvanized or acid-resistant stainless steel EN 1.4404 (ASTM 316L, SS 2348).

CERTIFICATE OF CONFORMITY

The fire resistance of the doors is certified in accordance with the EN 16034 standard.

Other parameters of the doors are assessed in accordance with the requirements of the EN 14351 series of standards.

The product complies with Swedish type approval documentation 0336/03 (RISE).



MEASUREMENTS AND PROPERTIES

Sound resistance	up to 44dB (ISO 717)
Thermal conductivity	from 1.0 W/m ² K (ISO 12567, ISO 10077)
Burglar resistance	up to RC4 (EN 1627)
Watertightness	class 3A/6B (EN 12208)
Air permeability	class C3 (EN 12207)
Resistance to wind load	class 3 (EN 12210)
Explosion resistance	up to EXR5 (EN13123-2)
Bullet resistance	up to FB6 (EN 1522)
Resistance to repeated opening and closing	class 6 (EN 12400), C5 (EN 13501-2)

The exact value of the characteristics above depends on the parameters of the door being projected.

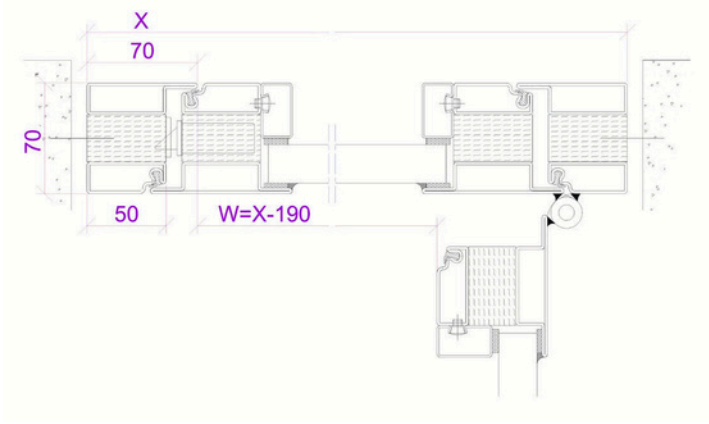
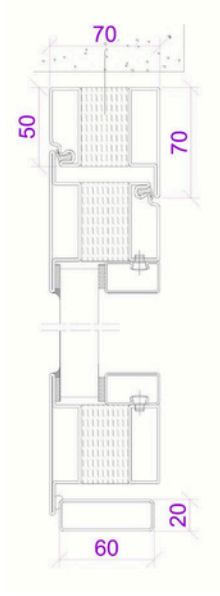
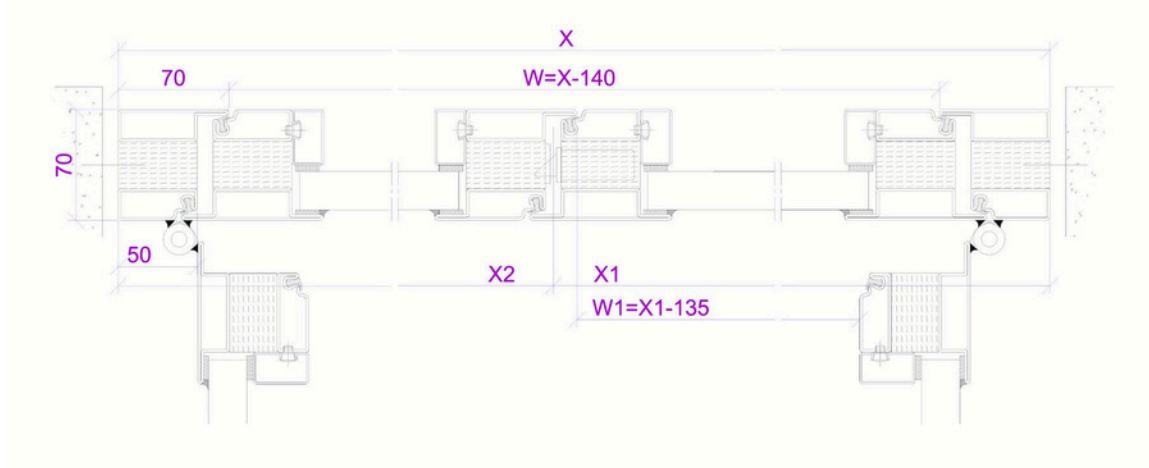
FINISHING

Door set can be powder or wet painted in different RAL colors or have stainless steel brushed or polished finish.

EXTRAS

The door can be fitted with different mechanical locks and door closer systems.

FRAME TYPES



ADJUFIX

